

# MID-WESTERN

8TH ANNUAL ANGUS AND SIMMENTAL BULL AND FEMALE SALE



04/09/2022

GILCHRIST FARMS, LUCKNOW, ONTARIO  
SALE HELD AT 1:00 PM

**GF**  
**Gilchrist Farms**





# Welcome

Bull sale season has always been an exciting and important time for us. It's a time of year for us to look at the structure of the last year's crop as they mature and an opportunity to analyze the data from birth right through to yearling, ultrasound as well as scrotal measurements. This all happens at a time of year where we are getting ready to make breeding decisions that will affect future bull and female sales. By utilizing AI and embryo transfer we are able take a very balanced approach to our breeding program. One that takes into consideration both the phenotypic structure of our cow herd with the performance data that put dollars into the pocket of our customers.

Over the years we have always looked at ways to add value to our customers programs and keeping true to this, we are excited to announce that we have added an abattoir and butcher shop to our operation. We encourage you to speak with us about opportunities to sell your calves produced by GF bulls back to us as we look to integrate a full start to finish program.

This bull sale has been built on trust and transparency and with that I can't think of a better group of breeders who I truly call friends. Rehorst, Premier and Harprey have an excellent set of bulls and females on offer that will make for excellent additions to any herd.

We welcome everyone to join us on April 9th for the 8th Annual Midwestern Bull sale. All of the bulls are at Gilchrist Farms now and available for viewing if you would like to see them prior to sale day.

# Safe INFORMATION

## AUCTIONEER...

Carl Wright 519-369-7489

## SALE DAY PHONES...



Ben Wright 519-374-3335

Chris Poley 306-220-5006

Shane Michelson 403-363-9973

Adrian Rehorst 519-357-7077

Brad Gilchrist 519-440-6720

Kristie Gilchrist 519-998-5696

(French speaking contact)

Allan Hargrave 519-375-5541

Peter Frijters 519-276-9314

## MARKETING AGENTS...

Jamie O'Shea 519-477-1238

Billy Elmhirst 705-761-0896

Jack McCoubry 519-671-2776

## CATALOGUE CREATED BY...

Today's Publishing 306-933-4200

## ACCOMMODATIONS...

Sommerville Court Motel Bed & Breakfast  
Lucknow, ON 866-863-2557

Best Western Plus Governor's Inn  
Kincardine, ON 519-396-8242

Holiday Inn Express & Suites Kincardine - Downtown  
Kincardine, ON 519-395-3545

Staybridge Suites - 20 Caroline Street South  
Hamilton, ON 905-527-1001

## DIRECTIONS...

From Lucknow head north on County Road 1 to 2nd corner (Grey Ox Ave) turn left or west 4th place on the left. Address: 1269 Grey Ox Ave., Lucknow, ON

## WATCH AND BID ONLINE...



DLMS  
Mark Shologan 780-699-5082

# CONSIGNORS

## GILCHRIST FARMS

Brad Gilchrist  
1269 Grey Ox Ave RR 5, Lucknow, ON N0G 2H0  
519-440-6720  
Kristie Gilchrist  
(French speaking contact)  
519-998-5696  
brad@gilchristfarms.com  
www.gilchristfarms.com

## PREMIER LIVESTOCK

Peter Frijters  
5164 Line 58 RR 2, Milverton, ON N0K 1M0  
519-276-9314  
peter@premierlivestock.ca

## REHORST FARMS LTD.

Adrian Rehorst  
412 Con 8 RR 3, Teeswater, ON N0G 2S0  
519-357-7077  
rehorst@wightman.ca

## HARPREY FARMS

Allan Hargrave,  
Don Hargrave  
and Jarrett Hargrave  
307483 Centre Line A, Proton Station, ON N0C 1L0  
519-923-5192  
Allan: 519-375-5541  
Don: 519-375-1500  
Jarrett: 519-374-5516  
harprey@gmail.com



# FROM THE DESK AT T BAR...

The 2022 edition of the Mid-Western Bull and Female sale will mark eight years that the Gilchrist Farms program, along with the good people of Rehorst Farms and Premier Livestock, have been supplying bulls of superior quality in the region. Together, they have formed the largest Black Angus bull sale East of the Manitoba border.

A feat such as this can only be accomplished by all outfits having the same goals in mind, and theirs is supplying the ultimate product to increase production and profitability for their customer. To do this, all operations implement a strict culling process, to ensure that only stock of the utmost quality is being offered to you.

The Eighth Anniversary offering this year includes many options for your cowherd, whether you are in the market for power bulls, or a specifically designed heifer bull. Take special note that a large portion of the offering comes from breed leading AI sires, which offers consistency and accuracy. These bulls are rated as the best sires available not only within the country, but in the continent itself. In keeping with the theme of consistency and accuracy, all of the bulls on offer have been fed on the same program since Thanksgiving. This program is put forth with longevity at top of mind, so you can rest assured that the program advancing herdsire you buy into has the capability to do a man's job well into the future. New this year is a small selection of top quality black, white-faced Simmental bulls. These bulls have been fed the same as the Angus, and offer calving ease with a special touch of hybrid in them.

A mainstay to the Mid-Western sale, the Hargrave family is once again supplying a top cut of open females. These girls come to you halter broke, with the look of a future mother cow. Combine that with the exciting paperwork these set of females possess, and you have a group that will surely impress in real life.

I invite you to please join us at the GF sale barn for ample hospitality and an excellent offering of cattle from this group of top-quality breeders. The T Bar crew is very knowledgeable of the cattle on offer, so please get in touch with any questions you may have. Brad encourages you to be in touch with him to tour Gilchrist Farms for viewing of the sale cattle anytime before the sale, and be sure to join us in person on April 9.

See you in Lucknow,

**BEN WRIGHT**

519-374-3335



**CHRIS POLEY**  
306-220-5006



**SHANE MICHELSON**  
403-363-9973



**BEN WRIGHT**  
519-374-3335





**1**

## GF LOCAL LEGEND 112J

2234684 | GFA 112J | JAN. 25, 2021

BW	WW (AUG 18)	EOT	EPDS	CE	BW	WW	YW	MCE	MILK
93	845	1760		2.0	3.9	100	171	6.0	30

QUAKER HILL MANNING 4EX9  
**E W A PEYTON 642**  
E W A 444 OF 968 PROGRESS

CONNEALY FINAL PRODUCT  
**GF JENA 905E**  
GF JENA 905C

EXAR DENVER 2002B  
QUAKER HILL BLACKCAP 0A32  
G A R PROGRESS  
EDGEWOOD LADY 968  
CONNEALY PRODUCT 568  
EBONISTA OF CONANGA 471  
C&C MC INTOSH 2038  
GF JENNA 905Z

If you are into producing high performance cattle that have growth, carcass and maternal attributes, Local Legend checks all these boxes. A maternal brother to the \$40,000 high selling bull GF Lucknow 905G, Local Legend is going to leverage that powerful dam and take data to new heights. No other bull in the entire Canadian Angus association database can match Local Legend for his combination of WW,YW,RADG, MARB and HPG. Local Legend posted an actual yearling weight of 1510 pounds taken 10 days before his first birthday.



GF JENA 905E | Dam



GF GROWTH FUND 905H | Maternal Brother



GF LUCKNOW 905G | Maternal Brother



**2**

**GF KRYPTONITE 50J**

2247959 | GFA 50J | JAN. 10, 2021

BW	WW (AUG 18)	EOT	PE	CE	BW	WW	YW	MCE	MILK
83	692	1495		3.0	2.4	64	114	5.5	28

JMB TRACTION 292  
**SCHIEFELBEIN ATTRACTIVE 4565**  
 FROSTY ANSWER 3979

LAGRAND MAF ANTIDOTE 5775  
**GF PURE PRIDE 5F**  
 FRANCISCO PURE PRIDE 5A

SITZ TOP GAME 561X  
 JMB EMULOTA 013  
 S A V FINAL ANSWER 0035  
 FROSTY ELBA LIZZY 1106  
 G13 STRUCTURE  
 MAPLE LANE FOREVER LADY 277  
 SILVEIRAS STYLE 9303  
 FRANCISCO'S PURE PRIDE 1W

Nuts, Guts and a Butt. I was once told that that is all you need to look for in a bull and well, here it is. 42 cm SC, a rib cage that stretches the chute out and a butt that puts Kim Kardashian to shame. His dam is one of our most attractive young females in the herd with an udder even the best plastic surgeon couldn't replicate. We are excited to see what the future holds in this sire and would like the opportunity to help promote him.

**SELLING ONE HALF INTEREST FULL POSSESSION**



**FRANCISCO PURE PRIDE 5A | Grandam**



**GF PURE PRIDE 5C | Maternal Sister to Dam**



**GF PURE PRIDE 5H | Maternal Sister to Dam**

April 9, 2022 - Lucknow, Ontario



**3**

**GF TOTAL PACKAGE 1440J**

2215979 | GFA 1440J | JAN. 18, 2021

BW	WW (AUG 18)	EOT	EPDS	CE	BW	WW	YW	MCE	MILK
77	600	1310		9.0	1.5	63	100	10.0	21

JMB TRACTION 292  
**SCHIEFELBEIN ATTRACTIVE 4565**  
 FROSTY ANSWER 3979

5T POWER CHIP 4790  
**GF TIBBIE 440F**  
 PM TIBBIE 4'15

SITZ TOP GAME 561X  
 JMB EMULOTA 013  
 S A V FINAL ANSWER 0035  
 FROSTY ELBA LIZZY 1106  
 EXAR BLUE CHIP 1877B  
 5T MISS WIX 8002  
 BAR-E-L NATURAL LAW 52Y  
 POPLAR MEADOWS TIBBIE 17'10

A proven, predictable pedigree here. This Attractive son is out of the famous Tibbie cow family. This one is as put together, smooth and complete as they come. This moderate statured square hipped bull has impressive carcass data coupled with excellent weaning and yearling weights. He was one of the highest marbling bulls of the sale with an abundance of hair and overall look. Last year, his maternal brother was a sale feature and is now being used as both a walking herd sire and an AI sire for Waltercroft Farms and Elm Valley Angus.

**\*\*Heifer Pen Approved\*\***



**PM TIBBIE 4'15** | Grandam



**GF TIBBIE 440H** | Maternal Sister to dam



**GF RED LIGHT 1440H** | Maternal Brother





GF RITA 166E | Dam



GF DARK SECRET 166H | Maternal brother



GF RITA 66Z | Maternal Sister to Granddam



4

## GF HANDSOME 166J

2215898 | GFA 166J | JAN. 05, 2021

BW	WW (AUG 18)	EOT	EPDS	CE	BW	WW	YW	MCE	MILK
98	644	1520		-2.0	3.8	81	146	-2.0	25

Long spined, up headed and added growth, this attractive son boasts excellent marbling data and backed by a highly maternal cow family, the Rita's. He ranks well into the top 1% of the breed for yearling weight and will add performance to his progeny.

JMB TRACTION 292  
**SCHIEFELBEIN ATTRACTIVE 4565**  
 FROSTY ANSWER 3979

5T POWER CHIP 4790  
**GF RITA 166E**  
 GF YOU KNOW ITS RITAS 166Y

SITZ TOP GAME 561X  
 JMB EMULOTA 013  
 S A V FINAL ANSWER 0035  
 FROSTY ELBA LIZZY 1106  
 EXAR BLUE CHIP 1877B  
 5T MISS WIX 8002  
 LIMESTONE DARKHORSE U322  
 WHITESTONE RITA 666T



GF RAINFALL 218G | Maternal Brother



GF POWER MOVE 218H | Maternal Brother



5

## GF GEARED UP 218J

2219306 | GFA 218J | JAN. 28, 2021

BW	WW (AUG 18)	EOT	EPDS	CE	BW	WW	YW	MCE	MILK
105	656	1535		-4.0	5.7	75	132	-2.0	16

There is loads of power in the blood here. Have a look at this pedigree stack: Kozi, Renown, Upward, Net Worth. Some of the industries stoutest featured, most maternal sires all stacked on top of each other. His maternal brother sold last year as a featured high-performance option to Strongbow Angus. His dam is one of the females that visitors gravitate towards each and every summer.

KOUPAL KOZI 22  
**KOUPAL KOZI 418**  
 KOUPAL EBONETTE 263

S A V RENOWN 3439  
**JL LADY 7218**  
 JL LADY 1067

O C C UNMISTAKABULL 896U  
 KOUPAL ELBA 0187  
 KOUPAL BRULEE 698  
 KOUPALS EBONETTE 545  
 RITO 707 OF IDEAL 3407 7075  
 S A V BLACKCAP MAY 4136  
 SITZ UPWARD 307R  
 JL LADY 8134



GF POWER AND CLASS 403H | Maternal Brother



**6**

**GF HOMETOWN 403J**

2215932 | GFA 403J | JAN. 02, 2021

BW	WW (AUG 18)	EOT	EPDS	CE	BW	WW	YW	MCE	MILK
100	728	1540		2.0	3.1	71	114	5.0	28

MUSGRAVE 316 STUNNER  
**GF LUCKNOW 905G**  
 GF JENA 905E

S TITLEST 1145  
**GF BLACKBIRD 304D**  
 GF BLACKBIRD 304B

LD CAPITALIST 316  
 MCATL BLACKBIRD 831-1378  
 CONNEALY FINAL PRODUCT  
 GF JENA 905C  
 RA LINCOLN W144  
 S CORA 572  
 LEACHMAN SAUGAHATCHEE 3000C  
 GF ULTIMATE NET WORTH 1U

The first son of the famous GF Lucknow 905G available at auction. When we incorporated Lucknow into our program, we wanted to leverage the power and performance that he had as an individual and the maternal strength of his dam. This son is just that, full of muscle shape, true in his type and kind and is sure to add power and performance to his progeny.



**GF BLACKBIRD 304B** | Dam



**GF BLACKBIRD 304D** | Maternal Sister



**POWER DRIVE 304J** | As a calf

**7**

**GF POWER DRIVE 304J**

2219307 | GFA 304J | JAN. 31, 2021

BW	WW (AUG 18)	EOT	EPDS	CE	BW	WW	YW	MCE	MILK
104	644	1420		-2.0	6.4	69	110	-1.0	13

EXAR BLUE CHIP 1877B  
**5T POWER CHIP 4790**  
 5T MISS WIX 8002

LEACHMAN SAUGAHATCHEE 3000C  
**GF BLACKBIRD 304B**  
 GF ULTIMATE NET WORTH 1U

DAMERON FIRST CLASS  
 GREENS PRINCESS 1012  
 B C MATRIX 4132  
 CIRCLE OAK MISS WIX 4014  
 N BAR EMULATION EXT  
 LEACHMAN B C 7100  
 S A V NET WORTH 4200  
 HFI BLACKBIRD 1K

Here is one of the most powerful Power Chip sons we have produced to date. GF Power Drive 304J came by his name honestly, ranking in the top 5% of the breed for WW and top 10% for YW. Not only will his calves perform at the top of the breed but his carcass weight ranking in the top 20% of the breed and an incredible top 1% REA makes him a sire who will produce progeny that produce an abundance of product. His dam has an excellent udder and a true feature in the pastures with her balance of eye appeal with raw power.

**8**



GF POWER BANK 1080H



8

**GF POWERCHIP 801J**

2219321 | GFA 801J | FEB. 09, 2021

BW	WW (AUG 18)	EOT	EPDS	CE	BW	WW	YW	MCE	MILK
94	530	1260		1.0	3.3	55	93	4.0	21

EXAR BLUE CHIP 1877B  
**5T POWER CHIP 4790**  
 5T MISS WIX 8002

LEACHMAN SAUGAHATCHEE 3000C  
**GF BLACKBIRD 801F**  
 GF ULTIMATE NET WORTH 1U

DAMERON FIRST CLASS  
 GREENS PRINCESS 1012  
 B C MATRIX 4132  
 CIRCLE OAK MISS WIX 4014  
 N BAR EMULATION EXT  
 LEACHMAN B C 7100  
 S A V NET WORTH 4200  
 HFI BLACKBIRD 1K

A very photogenic, moderately designed bull from the Blackbird cow family. His dam is the famous Saugahatchee x Networth mating that has worked so well for us and many others over the years. You won't find a prettier dam than his and just when you question her ability, she turns them out time and time again.



9

**GF BIG TIME 002J**

2215929 | GFA 002J | JAN. 02, 2021

BW	WW (AUG 18)	EOT	EPDS	CE	BW	WW	YW	MCE	MILK
99	736	1675		1.0	3.1	56	101	1.0	22

PVF INSIGHT 0129  
**HALL BIG TOP 840**  
 ZH DADDY'S GIRL 149

KOUPAL JUNCTION 037  
**GF EVENING TINGE 002F**  
 JL EVENING TINGE 1282

S A V BRILLIANCE 8077  
 PVF MISSIE 790  
 S CHISUM 8251  
 ZH UPTOWN GIRL 831  
 O C C JUNEAU 807J  
 KOUPAL EBONETTE 734  
 JUSTAMERE 253 BADA BING 406S  
 HF EVENING TINGE 57R

No matter where you produce cattle, we sell them by the pound and if you are looking at increasing performance and ribeye this is one that will put dollars into your pocket. This stout featured, high growth, long bodied bull ranked in the top 1% of the breed for ribeye area and is backed by the famous Evening Tinge cow family. His Junction sired dam has a flawless udder and one we hope to move into the donor program as she matures.



GF ALLEGRA 200E | with Allegra 2A

**10**

**GF LEADER 13J**

APPLIED FOR | GFA 13J | FEB. 01, 2021

BW	WW (AUG 18)	EOT	PE	CE	BW	WW	YW	MCE	MILK
80	692	1400		8.5	1.2	66	114	10.0	18

This is how we like to see our calving ease bulls built; deep sided, easy fleshing stout featured and all while able to come out of a first calf heifer. When you put this much power into your heifer pen not only do you get profitable cattle but your replacement pen the following year is impressive as well. His dam is a great young donor who packs a lot of muscle shape and power into a structurally sound package. This bull ranks in the top 15% of the breed for CE, 10% WW, 10% YW, 10% Claw, 10% Angle, 15% MARB and 15% REA; talk about a balanced spread of data.

- LD CAPITALIST 316
- MUSGRAVE 316 COLOSSAL 137**
- MUSGRAVE LADY BARBARA 545
- KR CASH FLOW
- GF ALLEGRA 200E**
- GILLCO ALLEGRA 2A

- CONNELLY CAPITALIST 028
- LD DIXIE ERICA 2053
- MUSGRAVE BIG SKY
- MUSGRAVE LADY BARBARA 272
- BARSTOW CASH
- WK LASS 1591
- S A V NET WORTH 4200
- GILLCO ALLEGRA 5T



**11**

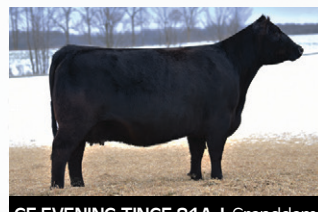
**GF A SHADE OF TINGE 81J**

2215946 | GFA 81J | JAN. 11, 2021

- LD CAPITALIST 316
- MUSGRAVE 316 COLOSSAL 137**
- MUSGRAVE LADY BARBARA 545
- C&C MC INTOSH 2038
- GF EVENING TINGE 81F**
- GF EVENING TINGE 81A

- CONNELLY CAPITALIST 028
- LD DIXIE ERICA 2053
- MUSGRAVE BIG SKY
- MUSGRAVE LADY BARBARA 272
- DAMERON FIRST CLASS
- RAC WINNIE 7456
- LEACHMAN SAUGAHATCHEE 3000C
- JL EVENING TINGE 8001

BW	WW (AUG 18)	EOT	EPDS	CE	BW	WW	YW	MCE	MILK
83	646	1375		11.0	1.2	64	111	14.0	27



GF EVENING TINGE 81A | Granddam

Evening Tinge! This is just a good solid bull across the board. He is not going to hit you like a freight train, but his progeny won't break you either. They will come easy and perform with moderate muscle shape and a really solid data set across all profit driving traits. He ranks in the top 1/3 of the breed for all of the following traits, CE, BW, WW, YW, RADG, DMI, CW, REA, FAT, MCE, and MILK.

**\*\*Heifer Pen Approved\*\***

**10**



KEMP BROTHERS BAILEY 52D | Grandam



12

**GF FINAL STAND 52J**

2215881 | GFA 52J | JAN. 01, 2021

BW	WW (AUG 18)	EOT	EPDS	CE	BW	WW	YW	MCE	MILK
83	650	1360		8.0	0.5	56	101	13.0	24

CONNEALY PRODUCT 568  
**CONNEALY FINAL PRODUCT**  
 EBONISTA OF CONANGA 471

KR CASH FLOW  
**GF BAILEY 52G**  
 KEMP BROTHERS BAILEY 52D

G A R RETAIL PRODUCT  
 PRIDE FINE OF CONANGA 566  
 CONNEALY DEEP CANYON 454  
 EBONISA OF CONANGA 5469  
 BARSTOW CASH  
 WK LASS 1591  
 S A V RESOURCE 1441  
 KEMP BRO'S BAILEY ZARA 14Z

Bulls that start low and grow is what we strive to produce and this one is one of the best at it. Ranking in the top 1/3 of the breed for CE, BW, WW, and YW! His dam and granddam are exceptional with outstanding udder quality, ease of fleshing and an overall beautiful design. Steers or heifers this one is sure to make them come easy, grow and develop the way we like them.

**\*\* Heifer Pen Approved\*\***





GF MERCEDES 328D | Dam



GF POWERCHIP 328G | Maternal brother

**13**

**GF MAKING BANK 328J**

2219244 | GFA 328J | JAN. 31, 2021

BW	WW (AUG 18)	EOT	EPDS	CE	BW	WW	YW	MCE	MILK
88	616	1340		4.0	1.1	54	94	7.0	36

Bold sprung rib, stout made and possesses an abundance of muscle shape through his stifle and lower quarter. GF Making Bank 328J is the total package bringing a balanced look complete with the fundamentals that make the beef industry profitable. Top 3% REA, 10% CW and top 1% ranking for Milk.

\*\*Heifer Pen Approved\*\*

LD CAPITALIST 316  
**CARDINAL CASH ADVANCE 60F**  
 CARDINAL LUCY 60D

S A V NET WORTH 4200  
**GF MERCEDES 328D**  
 GF MERCEDES 328Z

CONNELY CAPITALIST 028  
 LD DIXIE ERICA 2053  
 BARSTOW CASH  
 MSF LUCY 201  
 S A V 8180 TRAVELER 004  
 S A V MAY 2410  
 LEACHMAN SAUGAHATCHEE 3000C  
 HCC BLACK MERCEDES 13N

**14**

**GF BLACK KNIGHT 100J**

2219350 | GFA 100J | FEB. 26, 2021

LD CAPITALIST 316  
**CARDINAL CASH ADVANCE 60F**  
 CARDINAL LUCY 60D

CONNELY FINAL PRODUCT  
**GF CRUSH MAID 100F**  
 GF CRUSH MAID 100B

CONNELY CAPITALIST 028  
 LD DIXIE ERICA 2053  
 BARSTOW CASH  
 MSF LUCY 201  
 CONNELY PRODUCT 568  
 EBONISTA OF CONANGA 471  
 C&C MC INTOSH 2038  
 ELMGROVE CRUSH MAID 11P

BW	WW (AUG 18)	EOT	EPDS	CE	BW	WW	YW	MCE	MILK
83	460	1090		6.0	1.6	63	117	9.0	25

This is an intriguing bull with a unique pedigree that combines an outstanding phenotype coupled with phenomenal data. Black Knight is capable of working in your heifer pen while still posting breed leading growth and performance data ranking in the top 10% of the breed for WW, 8% YW and 5% CW. Foot quality is important and this sire ranks in the top 4% of the breed for Angle. This bulls granddam was champion two-year-old female at the Royal Winter Fair in 2017, and later moving her into the donor program where she continues to make balanced high-performing cattle.

\*\*Heifer Pen Approved\*\*



GF CRUSHMAID 100B | Dam

**12**



GF BARBARA 6A | Dam



GF BARBARA 63G



GF BARBARA 6E | Maternal Sister



**15**

**GF MONEY EARNED 6J**

2219374 | GFA 6J | MAR. 08, 2021

BW	WW (AUG 18)	EOT	EPDS	CE	BW	WW	YW	MCE	MILK
90	468	1120		1.0	1.5	59	100	7.0	17

A direct son of GF Barbara 6A! 6A has done it all, she's walked the red carpet demanding a banner at the Royal Winter Fair, produced some unbelievable progeny and ultimately earned her way into our donor pen. This natural born son by Cash Advance has a lot to offer with moderate birth, excellent growth and performance with a balanced herd improving carcass profile. This one will be intriguing to see mature and one who has a very bright future.

**\*\*Heifer Pen Approved\*\***

LD CAPITALIST 316  
**CARDINAL CASH ADVANCE 60F**  
 CARDINAL LUCY 60D

CONNELLY FINAL PRODUCT  
**GF BARBARA 6A**  
 BAILEY ACRES BARBARA 6S

CONNELLY CAPITALIST 028  
 LD DIXIE ERICA 2053  
 BARSTOW CASH  
 MSF LUCY 201  
 CONNEALY PRODUCT 568  
 EBONISTA OF CONANGA 471  
 S A V 5175 BANDO 1024  
 BAILEY ACRES BARBARA 2P



GF POWER AND CLASS 403H



GF BLACKBIRD 403G | Dam



**16**

**GF BLACK MARKET 1403J**

2219238 | GFA 1403J | MAR. 08, 2021

BW	WW (AUG 18)	EOT	EPDS	CE	BW	WW	YW	MCE	MILK
83	478	1130		5.0	3.2	66	114	8.0	22

Here is a pedigree that we are going to see become very popular at Gilchrist Farms. Cash Advance is the surfacing senior herd sire who has been knocking it out of the park. Cash Advance is a bull we would have loved to campaign, to show the world how incredibly impressive he is. But like many things, COVID has affected our ability to get this bull in front of customers. On the dam side, we have the immortal Powerchip who has made daughters that are soft sided, easy fleshing and maternal matrons. Stemming from the great Blackbird cow family this bull brings an attractive look with a stout square pose from behind. Ranks in the top 10% of the breed for both WW and YW.

April 9, 2022 - Lucknow, Ontario

LD CAPITALIST 316  
**CARDINAL CASH ADVANCE 60F**  
 CARDINAL LUCY 60D

5T POWER CHIP 4790  
**GF BLACKBIRD 403G**  
 GF BLACKBIRD 304D

CONNELLY CAPITALIST 028  
 LD DIXIE ERICA 2053  
 BARSTOW CASH  
 MSF LUCY 201  
 EXAR BLUE CHIP 1877B  
 5T MISS WIX 8002  
 S TITLST 1145  
 GF BLACKBIRD 304B



**17**

**GF MAN CHILD 12J**

2215943 | GFA 12J | JAN. 25, 2021

BLACKTOP XXL 5333  
**GF BLACKSTOCK 624G**  
 LLB LENA 624C

5T POWER CHIP 4790  
**OLD STONE EVENING TINGE 12G**  
 JL EVENING TINGE 1282

CONNEALY SHREK 4242  
 BLACKTOP BANDOLIER LADY 333  
 VIN-MAR O'REILLY FACTOR  
 BRIDGEHAVEN JENA 5W  
 EXAR BLUE CHIP 1877B  
 5T MISS WIX 8002  
 JUSTAMERE 253 BADA BING 406S  
 HF EVENING TINGE 57R

BW	WW (AUG 18)	EOT	EPDS	CE	BW	WW	YW	MCE	MILK
86	662	1465		2.0	2.8	63	101	7.0	9

Two years ago, we retained possession in the lot 1 GF Blackstock 624G, I felt that he could really do our program a lot of good. Throughout the summer as I watched these bulls grow and mature, I began to feel more and more confident in my decision to incorporate Blackstock back into the herd. Leading off the section of Blackstock sired progeny is this remarkably powerful deep bodied son of a truly impressive Powerchip daughter. We purchased this daughter as a featured attraction to the Royal Winter Fair as a heifer calf from our good friends at Otter Creek. This two-year-old has the growth and power that we have come to expect from our Evening Tinge daughters. Her udder quality, balance and overall attractiveness has made her an elite female in our program at just 3 years of age.







**18**

**GF KING MAKER 1683J**

2215990 | GFA 1683J | JAN. 21, 2021

BW	WW (AUG 18)	EOT	EPDS	CE	BW	WW	YW	MCE	MILK
72	598	1300		14.0	-1.7	43	70	15.0	15

A calving ease specialist. If you are looking for a deep sided, easy doing, highly docile bull to turn in with your heifers, this is one that sorts himself to the top of the list. His dam is an impressive Powerchip daughter out of a Saugahatchee donor we will be promoting heavily in the future. These Proven Queen females are attractive and highly maternal.

**\*\*Heifer Pen Approved\*\***

BLACKTOP XXL 5333  
**GF BLACKSTOCK 624G**  
 LLB LENA 624C

5T POWER CHIP 4790  
**GF PROVEN QUEEN 683G**  
 JENSENGREIMAN PROVEN QUEEN83

CONNELLY SHREK 4242  
 BLACKTOP BANDOLIER LADY 333  
 VIN-MAR O'REILLY FACTOR  
 BRIDGEHAVEN JENA 5W  
 EXAR BLUE CHIP 1877B  
 5T MISS WIX 8002  
 LEACHMAN SAUGAHATCHEE 3000C  
 GREIMAN JENSEN PROVEN QUEEN7



**GF PROVEN QUEEN 683G | Dam**



GF MERCEDES 328C | Grandam



**19**

**GF STOCKMAN 823J**

2215982 | GFA 823J | MAR. 20, 2021

BW	WW (AUG 18)	EOT	EPDS	CE	BW	WW	YW	MCE	MILK
75	628	1365		7.0	1.3	67	106	10.0	13

BLACKTOP XXL 5333  
**GF BLACKSTOCK 624G**  
 LLB LENA 624C

KR CASH FLOW  
**GF MERCEDES 823G**  
 GF MERCEDES 328C

CONNELLY SHREK 4242  
 BLACKTOP BANDOLIER LADY 333  
 VIN-MAR O'REILLY FACTOR  
 BRIDGEHAVEN JENA 5W  
 BARSTOW CASH  
 WK LASS 1591  
 MOHNEN SOUTH DAKOTA 402  
 GF MERCEDES 328Z

Our Mercedes cow family never disappoints and here is one that carries the name with pride. A calving ease sire with added performance and outstanding carcass traits. If you are not looking at carcass traits today, then you are leaving money on the table tomorrow, mark my words! Top 1/3 of the breed for CE, BW, WW, YW, CW, MARB, REA, and MCE.

**\*\*Heifer Pen Approved\*\***



GF MERCEDES 219F | Dam



GFA 291 | Maternal sister to dam

**20**

**GF BENZ 219J**

2215985 | GFA 219J | FEB. 10, 2021

BW	WW (AUG 18)	EOT	EPDS	CE	BW	WW	YW	MCE	MILK
99	676	1525		2.0	2.4	72	127	7.0	23

BLACKTOP XXL 5333  
**GF BLACKSTOCK 624G**  
 LLB LENA 624C

MOHNEN PULSE 533  
**GF MERCEDES 219F**  
 GF MERCEDES 219D

CONNELLY SHREK 4242  
 BLACKTOP BANDOLIER LADY 333  
 VIN-MAR O'REILLY FACTOR  
 BRIDGEHAVEN JENA 5W  
 MOHNEN HEARTRATE 1751  
 MOHNEN JILT 2360  
 MOHNEN SOUTH DAKOTA 402  
 GF MERCEDES 19Z

Here is another example of lining up the power and depth of Blackstock with the immortal Mercedes cow family. This particular dam has one of the largest spreads for birth to yearling in the entire Angus breed. Benz 219J will bring performance and power to your program with moderate birth with his top 3% ranking for both WW and YW. The future is bright for this bull's young donor dam!

# 21

## GF BLACKSTOCK 129J

APPLIED FOR I GFA 129J | MAR. 16, 2021

BLACKTOP XXL 5333  
GF BLACKSTOCK 624G  
LLB LENA 624C

S A V ELIMINATOR 9105  
JL PRIMROSE 4081  
JL PRIMROSE 9214

CONNEALY SHREK 4242  
BLACKTOP BANDOLIER LADY 333  
VIN-MAR O'REILLY FACTOR  
BRIDGEHAVEN JENA 5W  
RITO 707 OF IDEAL 3407 7075  
S A V ABIGALE 5646  
S A V CARBON COPY 7664  
ISLA BANK PRIMROSE 49K

BW	WW (AUG 18)	EOT	EPDS	CE	BW	WW	YW	MCE	MILK
82	594	1300		4.0	0.7	52	95	7.5	19

This attractive smooth put together bull is backed by an Eliminator daughter who is deep sided, highly productive and possesses an incredible udder. Another solid Blackstock son who is capable of adding performance in a balanced package.



JL PRIMROSE 4081 | Dam



# 22

## GF TANGIBLE 17J

2218176 | GFA 17J | APR. 12, 2021

BLACKTOP XXL 5333  
GF BLACKSTOCK 624G  
LLB LENA 624C

SANKEYS JUSTIFIED 101  
GF EVENING TINGE 17D  
GF EVENING TINGE 17Y

CONNEALY SHREK 4242  
BLACKTOP BANDOLIER LADY 333  
VIN-MAR O'REILLY FACTOR  
BRIDGEHAVEN JENA 5W  
SANKEYS LAZER 609 OF 6N  
SANKEYS ERICA 525  
N BAR EMULATION EXT  
JL EVENING TINGE 8001

BW	WW (AUG 18)	EOT	EPDS	CE	BW	WW	YW	MCE	MILK
78	556	1215		2.0	1.3	70	113	7.0	23

Tangible is another promising young bull out of one of our most impressive Evening Tinge females. Her udder quality is second to none and she's as deep sided and balanced as they come. This Blackstock son is going to add performance to your calf crop with his top 4% ranking for WW, top 10% YW and top 6% CW EPDs.

\*\*Heifer Pen Approved\*\*



GF EVENING TINGE 17Y | Grandam



# 23

## GF EASTERN 117J

2215939 | GFA 117J | JAN. 25, 2021

BLACKTOP XXL 5333  
GF BLACKSTOCK 624G  
LLB LENA 624C

KR CASH FLOW  
GF LUCY 711C  
GF LUCY 11C

CONNEALY SHREK 4242  
BLACKTOP BANDOLIER LADY 333  
VIN-MAR O'REILLY FACTOR  
BRIDGEHAVEN JENA 5W  
BARSTOW CASH  
WK LASS 1591  
CONNEALY FINAL PRODUCT  
GF LUCY 11A

BW	WW (AUG 18)	EOT	EPDS	CE	BW	WW	YW	MCE	MILK
70	510	1165		5.0	1.1	54	81	13.0	13





**24**

**GF FEELING GOOD 361J**

2215891 | GFA 361J | JAN. 01, 2021

PVF ALL PAYDAY 729  
**PVF WINDFALL SCC 9005**  
 DAMERON PVF PROVEN QUEEN 010

S A V PAYROLL 5281  
 P V F BLACKBIRD 201  
 LEACHMAN EXPLORER  
 P V F PROVEN QUEEN 602  
 MUSGRAVE INVISION  
 T L PRIDE 147  
 DEER PARK TEBOW 5Z  
 GF BARBARA 6A

MUSGRAVE INTEL  
**GF BARBARA 36E**  
 GF BARBARA 36C

BW	WW (AUG 18)	EOT	EPDS	CE	BW	WW	YW	MCE	MILK
101	708	1525		-3.0	3.4	49	92	4.0	34



**GF ENDLESS 361H | Maternal brother**

Power and growth and backed by a proven productive cow family. If you are looking for maternal traits, the Barbara cow family will inject a healthy dose into your herd through this high growth individual. Ranking in the top 1% of the breed for milk and daughters' pregnancy rates in the top 20%, this bull will produce those highly maternal daughters that we need to keep the future bright.

**25**

**GF INVESTMENT 801H**

2141215 | GFA 801H | MAR. 15, 2020

BW	ADJ. WW	EOT	EPDS	CE	BW	WW	YW	MCE	MILK
84	816	1725		-3.0	3.6	62	109	5.0	23

LD CAPITALIST 316  
**CARDINAL CASH ADVANCE 60F**  
 CARDINAL LUCY 60D

CONNELLY CAPITALIST 028  
 LD DIXIE ERICA 2053  
 BARSTOW CASH  
 MSF LUCY 201  
 N BAR EMULATION EXT  
 LEACHMAN B C 7100  
 S A V NET WORTH 4200  
 HFI BLACKBIRD 1K

LEACHMAN SAUGAHATCHEE 3000C  
**GF BLACKBIRD 801F**  
 GF ULTIMATE NET WORTH 1U

Border line too young to sell as a yearling we held this one back to sell as a 2 year old. This guy will turn out with a larger group of cows and bring performance to your herd with his top 15% ranking for both WW and YW. Foot quality is important when selecting a herd bull and not only does he rank in the top 2% for Claw and 7% for angle but go ahead and chase this one out onto the concrete and see for yourself!



**PICTURED AS A CALF**

Welcome to the Mid-Western Bull Sale. We're proud to be part of such a progressive group of seed stock producers. I think the sale has quickly become the go to for Angus bulls wether you're looking for your next purebred herd sire, or a power bull to run with a set of commercial cows. Or you maybe looking for a calving ease bull to put with a group of heifers, the Mid-Western Bull Sale is the place to be.

Thanks to Brad an Kristie Gilchrist for doing a excellent job developing the bulls.

Any questions feel free to call or we will se you April 9th

**PETER FRIJTERS**



## 26

### PREMIER JACKPOT 106

2192138 | PLS 106J | JAN. 11, 2021

BW	WW	EOT	EPDS	CE	BW	WW	YW	MCE	MILK
78	-	1280		6.0	2.6	50	80	7.0	21

PLAINVIEW LUTTON E102  
**OHL CHECK BOOK 0187C**  
O H L ANGEL 7171

5T POWER CHIP 4790  
**GF QUEENETTE 24F**  
WHISKEY LANE QUEENETTE 24C

EXAR LUTTON 1831  
PLAINVIEW PRIDE C123  
TC FREEDOM 104  
O H L SWEET DREAMS 917J  
EXAR BLUE CHIP 1877B  
5T MISS WIX 8002  
PVF WINDFALL SCC 9005  
SANE N.W. QUEENETTE 103Y

Here's one that will work in the heifer pens. A unique pedigree combination, OHL Checkbook son out of a hard working 5T Powerchip daughter who was our pick of the CF show string at the 2018 Toronto Royal. A stout made, good haired bull to use on heifers!



OHL GUNNER 7263G | Sire

**27**

**PREMIER GUNNER 105**

APPLIED FOR I PLS 105J | JAN. 09, 2021

BW	WW	EOT	PE	CE	BW	WW	YW	MCE	MILK
76	-	1415		8.0	2.6	77	118	10.0	25

- LD CAPITALIST 316
- OHL GUNNER 7263G**
- LAZY H BAR FOREVER LADY 793
- PVF INSIGHT 0129
- PFLC BARDETTA 4G**
- LEGEND LANE BARDETTA 824U

- CONNELLY CAPITALIST 028
- LD DIXIE ERICA 2053
- PLUM CREEK REFRESH 461A
- LAZY H BAR FOREVER LADY 317
- S A V BRILLIANCE 8077
- PVF MISSIE 790
- LEGEND LANE REVOLUTION 505
- PRIME TIME'S 31H BARDETTA 549

Heifer bull alert. Not very often do you find a heifer bull that has the ability to add pounds like this guy. The Gunner progeny are good footed, sound structured cattle that have the ability to put perform in their contemporaries. His dam is also comes from the Bardetta cow family, she did a great job with 105 as a two year old. Powerful heifer bull!!!



**28**

**PREMIER 112**

APPLIED FOR I PLS 112J | JAN. 21, 2021

BW	WW	EOT	PE	CE	BW	WW	YW	MCE	MILK
86	-	1350		3.0	2.7	58	98	7.0	27

- EXAR CLASSEN 1422B
- MICH WHEATLAND HICALIBER 7197E**
- EXAR HIGHROSE 84026
- SOO LINE MOTIVE 9016
- JKS MISS CHEYENNE 4613**
- J K S MISS CHEYENNE 4209

- DAMERON FIRST CLASS
- EXAR PRINCESS 2006
- EXAR PIT BOSS 409
- CURTIS HIGHROSE 807
- HF KODIAK 5R
- TLA BEAUTY 5R
- A A R NEW DESIGN 6537
- J K S MISS CHEYENNE 2267

112 is a full brother to one of last years feature bulls selling to our good customer Brokeland Cattle. 112 is similar to his brothers in terms of a being a stout, soft made long sided son of the many time supreme champion bull Hi Caliber, his dam is a never miss model Angus cow. A big performance bull to use on cows or larger framed heifers.



**29**

**PREMIER JAMMAR 119**

2198094 | PLS 119J | FEB. 20, 2021

BW	WW	EOT	EPDS	CE	BW	WW	YW	MCE	MILK
82	752	1365		2.0	4.1	49	82	4.0	21

119 is one that has the look that stops you in your tracks. He is a stout made good looking stud. His dam hails from one of the most prolific cow families we have had the chance to work with. Bardetta 4C is a power cow that knows how to get it done. If you're looking to combine muscle and structure, 119 is one you need to look up.

Owned with Hasson Livestock

SILVEIRAS STYLE 9303  
**SILVEIRAS S SIS GQ 2353**  
 K N C CABIN CREEK SANDY 804

S A V FIRST CLASS 0207  
**PFLC BARDETTA 4C**  
 LEGEND LANE BARDETTA 824U

GAMBLES HOT ROD  
 SILVEIRAS ELBA 2520  
 B C LOOKOUT 7024  
 K N C CABIN CREEK SANDY  
 S A V NET WORTH 4200  
 S A V DUKE GIRL 7348  
 LEGEND LANE REVOLUTION 505  
 PRIME TIME'S 31H BARDETTA 549

**30**

**PREMIER JAG 104**

2192139 | PLS 104J | JAN. 07, 2021

EXAR CLASSEN 1422B  
**MICH WHEATLAND HICALIBER 7197E**  
 EXAR HIGHROSE 84026

S A V NET WORTH 4200  
**PREMIER NP PRIDE 432**  
 BABY BLACK LOOKIN GREAT

DAMERON FIRST CLASS  
 EXAR PRINCESS 2006  
 EXAR PIT BOSS 409  
 CURTIS HIGHROSE 807  
 S A V 8180 TRAVELER 004  
 S A V MAY 2410  
 B C LOOKOUT 7024  
 LEGEND LANE EDITION PRIDE 508

BW	WW	EOT	EPDS	CE	BW	WW	YW	MCE	MILK
86	-	1475		1.0	4.4	56	95	6.0	23

104 is a high performance son of Mich Wheatland Hi Caliber, he is a stout made power bull that has incredible length of side and a great set of feet and legs. He's a full brother to Premier Pride 015, the sale feature of the 2020 Falls View sale, selling for \$42,000 Leigh Gavin of PEI. His dam is a very productive sensible sized daughter of SAV Net. Worth who is well known for making good uddered hard working cows. Power + Performance combine with phenotype!!





**31**

**PREMIER JAXSON 110**

2238434 | PLS 110J | JAN. 12, 2021

DAMERON FIRST IMPRESSION  
**PREMIER FUSION 809F**  
 PREMIER GEORGINA 421

S A V BRILLIANCE 8077  
 DAMERON NORTHERN MISS 3114  
 BRUIN UPROAR 0070  
 QVS GEORGINA 0051  
 S A V HERITAGE 6295  
 S A V EMBLYNETTE 7749  
 EXAR UPSHOT 0562B  
 CF BLACKBIRD 1231 S

S A V HARVESTOR 0338  
**WILLDINA HARV BLACKBIRD 96G**  
 PFLC BLACKBIRD 74B

BW	WW	EOT	EPDS	CE	BW	WW	YW	MCE	MILK
80	-	1285		-1.0	4.4	54	97	4.0	24

A Fusion son out of a first calf SAV Harvestor is daughter. 110 is a wide based thick meaty beef bull. He is very flexible and good at the ground. Premier Fusion continues to make a mark in many herds across the country. Here's an opportunity to use a son.



**32**

**PREMIER BLUE CHIP 093**

2180732 | PLS 93H | FEB. 09, 2020

DAMERON FIRST CLASS  
**EXAR BLUE CHIP 1877B**  
 GREENS PRINCESS 1012

EXG RS FIRST RATE S903 R3  
 DAMERON NORTHERN MISS 3114  
 GREENS PREMIUM 7578  
 GREENS PRINCESS 7418  
 O C C LEGEND 616L  
 GIBBET HILL MIGNONNE E37  
 DAMERON FIRST IMPRESSION  
 OSU EMPRESS 0135

B C LOOKOUT 7024  
**PREMIER HASSON EMPRESS 706**  
 OSU EMPRESS 3100

BW	WW	EOT	EPDS	CE	BW	WW	YW	MCE	MILK
82	-	-		1.0	3.2	59	96	6.0	19

An extra age bull here to cover a bigger group of cows! Blue Chip is one we think will produce a set of hrfs that you will want to retain an put back in the cow herd. His dam is a great BC Lookout daughter out of the famed OSU Empress cow, a cow that has made a huge contribution to our program. A royally bred young bull that has the genetics to make a difference!



## ANGUS OFFERING

Welcome to the 8th annual sale here for the Mid-Western group. When we formed this sale we wanted it to be an opportunity for our program to showcase our years of effort and breeding the best quality of livestock we could. We invite you to check out the bulls at anytime ahead of the sale. Please feel free to contact Ben Wright or myself with any questions you may have.

ADRIAN REHORST



### 33

## REHORST PRESIDENT 23J

2208166 | RHFL 23J | FEB. 17, 2021

BW	EOT	PROJ. SALE WT	EPDS	CE	BW	WW	YW	MCE	MILK
69	1330	1400		4.0	2.1	66	116	2.0	26

- Stout, proud made President son
- His dam is a notable cow within the industry
- Perfect combination of low birth to high yearling
- Standout bull with presence



JL FOREVER LADY 6104 | Dam

COLEMAN CHARLO 0256  
S A V PRESIDENT 6847  
S A V BLACKCAP MAY 4136

S A V RENOWN 3439  
JL FOREVER LADY 6104  
JL FOREVER LADY 1280

O C C PAXTON 730P  
BOHI ABIGALE 6014  
S A V 8180 TRAVELER 004  
S A V MAY 2397  
RITO 707 OF IDEAL 3407 7075  
S A V BLACKCAP MAY 4136  
SITZ UPWARD 307R  
GDAR FOREVER LADY 6139



**34**

**REHORST JUNES ELIMINATOR 18J**

APPLIED FOR I RHFL 18J | JAN. 31, 2021

BW	EOT	PROJ. SALE WT	PE	CE	BW	WW	YW	MCE	MILK
81	1495	1600		1.5	2.7	62	118	1.0	31

- His dam, June 1070, has over 40 direct offspring
- Eliminator sons are extremely maternal
- Keep every heifer off this bull for replacement

RITO 707 OF IDEAL 3407 7075  
**S A V ELIMINATOR 9105**  
 S A V ABIGALE 5646

SITZ UPWARD 307R  
**JL JUNE 1070**  
 JL JUNE 06 40

R R RITO 707  
 IDEAL 3407 OF 1418 076  
 S A F 598 BANDO 5175  
 S A V ABIGALE 6062  
 CONNEALY ONWARD  
 SITZ HENRIETTA PRIDE 81M  
 BOYD NEW DAY 8005  
 JUNE OF PEAK DOT 813P



S A V ELIMINATOR 9105 | Sire



YOUNG DALE DEFIANCE 199F | Sire



**35**

## REHORST DEFIANCE 6J

2208144 | RHFL 6J | JAN. 06, 2021

BW	EOT	PROJ. SALE WT	EPDS	CE	BW	WW	YW	MCE	MILK
70	1515	1600		5.0	3.4	66	119	7.0	30

- Big, strong Defiance son that offers a new pedigree
- His Upward dam has been a pillar in our program

YOUNG DALE HI DEFINITION 185B  
**YOUNG DALE DEFIANCE 199F**  
 YOUNG DALE GRACE 126Z

SITZ UPWARD 307R  
**JL JUNE 1070**  
 JL JUNE 06 40

PF HOOVER DAM 041  
 BLACK HAMCO COUNTLESS 417T  
 YOUNG DALE PANARAMA 66T  
 YOUNG DALE GRACE 19T  
 CONNEALY ONWARD  
 SITZ HENRIETTA PRIDE 81M  
 BOYD NEW DAY 8005  
 JUNE OF PEAK DOT 813P



JL LADY 3059 | Dam



**36**

## REHORST FINAL ANSWER 30J

2208172 | RHFL 30J | MAR. 03, 2021

BW	EOT	PROJ. SALE WT	EPDS	CE	BW	WW	YW	MCE	MILK
68	1215	1400		8.0	0.8	51	87	9.0	22

- Sure shot heifer bull
- Mother was the lead off cow at the Johnson Livestock Dispersal for \$32,000

SITZ TRAVELER 8180  
**S A V FINAL ANSWER 0035**  
 S A V EMULOUS 8145

S A V FOUR SEASONS 5231  
**JL LADY 3059**  
 LADY OF PEAK DOT 779L

G D A R TRAVELER 71  
 SITZ EVERELDA ENTENSE 1137  
 BON VIEW BANDO 598  
 S A V SKY EMULOUS 2124  
 S A V 8180 TRAVELER 004  
 S A V MAY 2397  
 HF MOST WANTED 46H  
 LADY OF PEAK DOT 331J

**37****RHF RIDDLER 9J**

APPLIED FOR I RHF 9J | JAN. 10, 2021

LFE GOTHAM 819Y  
**LFE THE RIDDLER 323B**  
 LFE BS CHARO 23Y

WHEATLAND BULL 680S  
**BARLEE ABBEY ROAD**  
 CAS HUGS N KISSES 1W

LFE THE DARK NIGHT 350U  
 LFE BEST LADY 47W  
 TNT TANKER U263  
 LFE CHARO 3N  
 WHEATLAND BULL 131L  
 WHEATLAND LADY 351N  
 REMINGTON ON TARGET 2S  
 LFE CANDY KISSES 39S

BW	EOT	PROJ. SALE WT	PE	CE	BW	WW	YW	MCE	MILK
75	-	1600		6.0	3.4	88.9	139.8	3.9	23

- Goes back to the famous Hugs N Kisses
- Use these Sim bulls to add performance

**38****RHF BANKROLL 10J**

BPG1382438 | RHF 10J | JAN. 10, 2021

W/C LOADED UP 1119Y  
**W/C BANKROLL 811D**  
 MISS WERNING KP 8543U

TAYLORS BLACK JOURNEY  
**RHF DO CARMO 27T**  
 REHORST RHF 27K

REMINGTON LOCK N LOAD 54U  
 AUBREYS BLACK BLAZE III  
 WAGR DREAM CATCHER 03R  
 MISS WERNING 534R  
 TAYLORS BLACK GRANVILLE  
 TAYLORS BLACK FATIMA  
 BLACK IRISH KANSAS  
 TAYLORS LADY BRAE GC27

BW	EOT	PROJ. SALE WT	EPDS	CE	BW	WW	YW	MCE	MILK
78	-	1400		11.1	2.2	72.8	102.8	7.2	26.9

- Baldie Bankroll son with loads of hair

**39****BROOKSLAND KISSES 7J**

BPG1359747 | BLF 7J | JAN. 30, 2021

W/C BANKROLL 811D  
**DOUBLE BAR D BANKROLL 804F**  
 WLE CRUISIN SUSAN T26

OUTLAW SODA POP 14B  
**BARLEE HUGS N KISSES 7F**  
 CAS HUGS N KISSES 1W

W/C LOADED UP 1119Y  
 MISS WERNING KP 8543U  
 CNS DREAM ON L186  
 MISS CHLOE RF26K  
 DRAKE POKER FACE 2X  
 HPF CREAM SODA Y010  
 REMINGTON ON TARGET 2S  
 LFE CANDY KISSES 39S

BW	WW	EOT	EPDS	CE	BW	WW	YW	MCE	MILK
75	-	-		11.6	1.7	75.8	105.9	6.9	21.7

- Lots of chrome to this low birth weight bull
- His beautiful mother is another reason to buy this guy



BARLEE HUGS N KISSES 7F | Dam

**SIMMENTAL OFFERING**

8th Annual Mid-Western Ontario Angus &amp; Simmental Bull &amp; Female Sale



*Heifers*

# HARPNEY FARMS

Allan, Donald and Jarrett Hargrave  
 Allan: 519-375-5541 Donald: 519-375-1500  
 Jarrett: 519-374-5516 harprey@gmail.com

We are honored to be a part of this year's edition of the Midwestern Bull and female sale. Again, we have another offering that we are very proud of with pedigrees and type to fit the needs of progressive cattlemens programs. All heifers sell double Vaccinated with modified live Express 10, halter broke, and ready to go to work.

## HARPNEY FARMS



© Blackhawk

**40**

## HARPNEY ANGELINA 34J

2209109 | PSH 34J | FEB. 01, 2021

BW	ADJ WW	EPDS	CE	BW	WW	YW	MCE	MILK
84	626		3.0	1.7	63	102	-1.0	26

Angelina has been one to always catch the eye of those who visit, with her sharp uplifted front end with that Angus cow look to her its easy to see why. She combines a super balanced look with the sharp front end adequate amount of rib, into a square hind third we feel she will mature into a beautiful productive cow just like her dam.

LD CAPITALIST 316  
**MUSGRAVE 316 STUNNER**  
 MCATL BLACKBIRD 831-1378

YOUNG DALE XCALIBER 32X  
**YOUNG DALE ANGELINA 134C**  
 YOUNG DALE ANGELINA 15Y

CONNELLY CAPITALIST 028  
 LD DIXIE ERICA 2053  
 MCATL PURE PRODUCT 903-55  
 MCATL BLACKBIRD 1378-573  
 YOUNG DALE KNOCK OUT 134U  
 BROOKMORE TIBBIE 222T  
 YOUNG DALE BAZAAR 16W  
 YOUNG DALE ANGELINA 59W



© Buschbeck

**41**

**HARPREY CLOVA PRIDE 66J**

2211952 | PSHJ 66J | MAR. 03, 2021

BW	ADJ WW	EPDS	CE	BW	WW	YW	MCE	MILK
88	651		1.0	2.9	56	99	3.0	22

Here is the youngest in the offering this year. A very complete individual that demands your attention as soon as you walk in the pen. With her beautiful angular front end, nice sweep of rib through her middle, and nicely balanced hind third. Her maternal sister was selected in last years edition by Melmac Angus. This beautiful Jullian female is one you don't want to miss out on.

YOUNG DALEJULLIAN 153Z  
**YOUNG DALE JULLIAN 64E**  
 YOUNG DALE RUBY 53B

LONE STAR B.A.B.  
**LONE STAR CLOVA PRIDE 20D**  
 LONE STAR CLOVA PRIDE 2W

YOUNG DALE JULIAN 108X  
 S A V MADAME PRIDE 0261  
 YOUNG DALE NOZEKA 2Z  
 YOUNG DALE RUBY 28T  
 SALT CREEK BOB 7003  
 LONE STAR BLOOMINDALE 1P  
 G A R GRID MAKER  
 LONE STAR CLOVA PRIDE 3S



**42**

**HARPREY BARBARA MCHENRY 6J**

2210676 | PSH 6J | JAN. 02, 2021

BW	ADJ WW	EPDS	CE	BW	WW	YW	MCE	MILK
78	628		6.0	1.7	60	104	6.0	28

This is a big, long bodied heifer sired by one of our all time favorites HF Alcatraz. With the first group of Alcatraz females calved out this year we question why we would sell any! They are perfect uddered with loads of milk, excellent footed, good mother cows. We don't think you could have enough Alcatraz females. Backed by the Barbara McHenry cow family we know this female will have some longevity to her and will make a profitable addition to any herd.

MAY-WAY BREAKOUT 1310  
**HF ALCATRAZ 60F**  
 HF MAYFLOWER 191Z

COLBURN PRIMO 5153  
**HARPREY BARBARA MCHENRY 33F**  
 HARPREY BARBARA MCHENRY 7X

AVF BREAKOUT 5409  
 MAY-WAY LADY BANDO 086  
 HF TIGER 5T  
 HF MAYFLOWER 78P  
 DAMERON FIRST CLASS  
 SILVEIRAS SARAS DREAM 1339  
 S A V PIONEER 7301  
 HARPREY BARBARA MCHENRY 16S



**43**

**HARPREY BIRDIE 18J**

2210689 | PSH 18J | JAN. 09, 2021

BW	ADJ WW	EPDS	CE	BW	WW	YW	MCE	MILK
76	631		6.0	2.2	60	100	7.0	25

This Cash Advance daughter has always been a favorite around here from the day she was born. She's always had that look at me attitude with a beautiful phenotype. Her dam set the bar high with this first progeny, 31G has another outstanding heifer calf in 2022. We think she is only getting started and this heifer will be the same way.

LD CAPITALIST 316  
**CARDINAL CASH ADVANCE 60F**  
 CARDINAL LUCY 60D

YOUNG DALE BELIEVE 46B  
**HARPREY BIRDIE 31G**  
 PTTV BIRDIE 440'04

CONNELLY CAPITALIST 028  
 LD DIXIE ERICA 2053  
 BARSTOW CASH  
 MSF LUCY 201  
 YOUNG DALE XCALIBER 32X  
 YOUNG DALE GRACE 126Z  
 T J ELDORADO W708  
 BIRDIE OF RAINBOW HILLS 91C



**44**

**HARPREY KIM 24J**

2210672 | PSH 24J | JAN. 15, 2021

S A V REGISTRY 2831  
**S A V SENSATION 5615**  
 S A V BLACKCAP MAY 4136

C&C TUITION 3025 EXAR  
**HAMMELL 2C KIM 9F**  
 HAMMELL 879S KIM 2C

RITO 707 OF IDEAL 3407 7075  
 S A V MADAME PRIDE 0075  
 S A V 8180 TRAVELER 004  
 S A V MAY 2397  
 EXAR CLASSEN 1422B  
 RAC WINNIE 7456  
 S A V BRILLIANCE 8077  
 REMITALL KIM 879S

BW	ADJ WW	EPDS	CE	BW	WW	YW	MCE	MILK
74	576		4.0	0.9	56	100	7.0	19

Here is a sharp individual sired by Sensation. She boosts a nice phenotype and beautiful spread on BW to YW EPDs. The Kim cow family has been very influential for the Lornecliffe herd and we felt they would be excellent additions to our herd, and we are sure this one will go out and work for you as a productive brood cow.



**45**

**HARPREY LADY TIPTOP 30J**

2209110 | PSH 30J | JAN. 24, 2021

YOUNG DALE XCALIBER 32X  
**YOUNG DALE BELIEVE 46B**  
 YOUNG DALE GRACE 126Z

REMITALL F EXCALIBER 43Z  
**LLB LADY TIPTOP 244C**  
 LLB LADY TIPTOP 506W

YOUNG DALE KNOCK OUT 134U  
 BROOKMORE TIBBIE 222T  
 YOUNG DALE PANARAMA 66T  
 YOUNG DALE GRACE 19T  
 S A V PRODIGY 8101  
 JUSTAMERE 234R FREE 836W  
 LLB FREE WHEELER 585S  
 LLB LADY TIPTOP 271N

BW	ADJ WW	EPDS	CE	BW	WW	YW	MCE	MILK
74	557		6.0	1.6	55	89	7.0	13

We could sit here and fill an entire page about how great Believe females are. They carry a pile of hip, mass, bone and have the most beautiful Angus cow look to them. Many high sellers and top producing cows for us are Believe daughters. This heifer we feel will be right up there with them, she expresses the same shape to her hip, the sweep to her rib and most important that Angus cow look. This female has high earning potential, don't over look this one.





**46**

**HARPREY PANSY 35J**

2209089 | PSH 35J | FEB. 02, 2021

STEVENSON TURNING POINT  
**CONLEY SOUTH POINT 8362**  
 P R LADY 909 4200-587

BROOKING HEIRLOOM 6146  
**BROOKING PANSY 9108**  
 MISS BAN PANSY 12W

PLATTEMERE WEIGH UP K360  
 STEVENSON PRIDE I167X  
 S A V NET WORTH 4200  
 P R 587 205-537  
 S A V HARVESTOR 0338  
 E A ROSE 918  
 HF KODIAK 5R  
 PANSY OF PEAK DOT 803S

BW	ADJ WW	EPDS	CE	BW	WW	YW	MCE	MILK
85	737		4.0	4.0	72	122	8.0	23

We selected the 9108 female in Brookings open invitational for her massive hip, big boned and had that cow look written all over her. Having the shot of E A Rose 918 in her was definitely an added bonus. This is her first calf sired by South Point, she puts together many of the same features of her dam, big square hip, added bone, and she is hairy! With the added rib and nice front end this could be a competitive project for a junior project!



**47**

**HARPREY BELLEMERE 46J**

2209105 | PSH 46J | FEB. 13, 2021

YOUNG DALEJULLIAN 153Z  
**YOUNG DALE JULLIAN 64E**  
 YOUNG DALE RUBY 53B

HARPREY SLUGGER 11U  
**HARPREY BELLEMERE 52C**  
 CHICO BELLEMERE 17Y

YOUNG DALE JULIAN 108X  
 S A V MADAME PRIDE 0261  
 YOUNG DALE NOZEKA 2Z  
 YOUNG DALE RUBY 28T  
 IDEAL 4355 OF 0T26 2440  
 HARPREY FLORA 17M  
 GH CANADIAN RASCAL 54R  
 CHICO BELLEMERE 27T

BW	ADJ WW	EPDS	CE	BW	WW	YW	MCE	MILK
82	652		6.0	1.2	52	90	6.0	24

This female packs everything we hoped the Jullian females would turn out to be. Big hiped, big boned and strong feet that possess lots of heel. The Jullian females have very nice udders that are balanced, nice teat size and smooth attachments. Combine this with the Bellemere cow family we think this heifer has maternal powerhouse written all over.



**48**

**HARPREY BIRDIE 64J**

2209923 | PSH 64J | MAR. 01, 2021

YOUNG DALE JULLIAN 153Z  
**YOUNG DALE JULLIAN 64E**  
 YOUNG DALE RUBY 53B

YOUNG DALE JULIAN 108X  
 S A V MADAME PRIDE 0261  
 YOUNG DALE NOZEKA 2Z  
 YOUNG DALE RUBY 28T  
 BARSTOW CASH  
 WK LASS 1591  
 S A F FOCUS OF E R  
 HARPREY BIRDIE 28W

KR CASH FLOW  
**HARPREY BIRDIE 64E**  
 HARPREY BIRDIE 38Y

BW	ADJ WW	EPDS	CE	BW	WW	YW	MCE	MILK
84	627		3.0	2.0	56	102	4.0	24

Here is another beautiful Jullian daughter. Out of a KR Cashflow this heifer as performance written all over her, while keeping a low BW EPD makes future matings to her very simple. With the growth spread of 1.9 BW to 102 YW she will raise bulls that commercial cattlemen will love and replacements that you will want to fill your pen with.



**49**

**HARPREY EVENING TINGE 65J**

2212454 | PSHJ 65J | MAR. 01, 2021

HBH DOMINIC 29D  
**LLB DOMINIC 884F**  
 BROOKMORE TIBBIE 112Z

PA FORTITUDE 2500  
 HBH PRINCESS 480B  
 MOHNEN DYNAMITE 1356  
 BROOKMORE TIBBIE 88U  
 S A V REGISTRY 2831  
 S A V BLACKCAP MAY 4136  
 XCEL ESKER NORTHERN LIGHT 101Z  
 GF EVENING TINGE 81A

S A V SENSATION 5615  
**HARPREY EVENING TINGE 35F**  
 GF EVENING TINGE 81C

BW	ADJ WW	EPDS	CE	BW	WW	YW	MCE	MILK
82	612		6.0	1.5	47	90	10.0	21

Combining Evening Tinge and Tibbie cow families seems like a master plan from anyone's play book. The maternal stacking in this heifer's pedigree gives strong indications for future progeny and a productive brood cow. One of the younger heifers in the offering but she really pulls a lot together in terms of performance and style and one that we think has a bright future ahead of her.

# MID-WESTERN

8TH ANNUAL ANGUS AND SIMMENTAL BULL AND FEMALE SALE



04/09/2022

GILCHRIST FARMS, LUCKNOW, ONTARIO  
SALE HELD AT 1:00 PM

**GF**  
**Gilchrist Farms**



# TERMS AND CONDITIONS

# NOTES

**TERMS:** The terms of the sale are cash or cheque payable at par at sale location unless satisfactory credit arrangements have been made previous to the sale. The right of property shall not pass until after settlement is made. The sale group reserves the right to require a certified cheque as settlement before releasing any sale cattle. Should any purchaser fail to settle for his purchase the seller reserves full power to resell the animal to the best advantage either publicly or privately, without further notice. Any loss arising from such resale together with keep and all other expenses shall be payable by the defaulter. All settlements must be made with the clerks of the sale before any cattle will be released.

**BID:** Every animal consigned to the sale must be sold by auction. No private sales will be allowed except as otherwise provided for in the terms and conditions. No by-bidding will be permitted. Each animal will be sold to the highest bidder.

**DISPUTES:** In cases of disputes, bidding will be reopened between the parties involved. If no further bid is made, the buyer will be the person from whom the auctioneer accepted the last bid. The auctioneer's decision in such matters will be final.

**PURCHASER'S RISK:** Each animal becomes the risk of the purchaser as soon as sold. Animals will be cared for at the purchaser's risk for a reasonable length of time.

**ANNOUNCEMENTS:** From the auction block will take precedence over the printed matter in the catalog. Buyers are therefore cautioned to pay attention to any such announcements.

**HEALTH:** It is the buyer's responsibility to determine health requirements for importing any animal into his province or state.

**CERTIFICATE OF REGISTRY:** A registration/recordation certificate issued by the Canadian Angus Association or the Canadian Charolais Association and duly transferred will be furnished to the buyer of each animal after settlement has been made. It is the responsibility of the buyer to determine the acceptance of this certificate in any other association.

**PEDIGREE ESTIMATES:** Pedigree Estimates (PE) are created on the projected mating of the animal's sire and dam based on averages of the two, creating estimated values that do not hold the same accuracy of actual EPDs issued from the association and should be used as such.

**SHIPPING:** Assistance will be given in making shipment after the sale but no risk is assumed by the Sales Management or Seller. Expenses incurred are the responsibility of the purchaser. Purchasers are requested to furnish shipping instructions when making settlement.

**BREEDERS GUARANTEE:** As per applicable Canadian Breed Association Breeding Guarantee guidelines. Copies are available at the sale settlement desk to be picked up by the buyer at any time. In no event shall the seller be responsible for reimbursing more than the purchase price.

**ACCIDENTS:** Although every precaution will be taken to protect the safety and comfort of buyers, neither the Sales Management, auctioneer, consignors or Association assumes any responsibility in this matter and disclaims any liability legal or otherwise in the event of accident or loss of property.

**RIGHTS AND OBLIGATIONS:** The above terms and conditions of the sale shall constitute a contract between the buyer and the seller and be equally binding to both. Resale of animals following purchase in this sale shall constitute a separate transaction and the rights and obligations of the two parties connected thereto are not covered by the terms and conditions of this sale.

Return Undeliverable  
Canadian Addresses To:

T Bar C Cattle Co. Ltd.  
Box 2330  
Warman, SK S0K 4S0



CREATED BY:

